



Project information

Project type:	ECO-rehabilitation
Address:	Drottninggatan 126-132
End construction year:	2010
Building type:	Multi family houses
Dwellings:	140
Storeys:	5-7
Persons in building:	392
Gross area BTA:	17,250 m ²
Net area:	13,987 m ²
Window/door area:	2909 m ²
Total eligible costs:	50.3 €/m ²
Total costs:	N.a. €/m ²

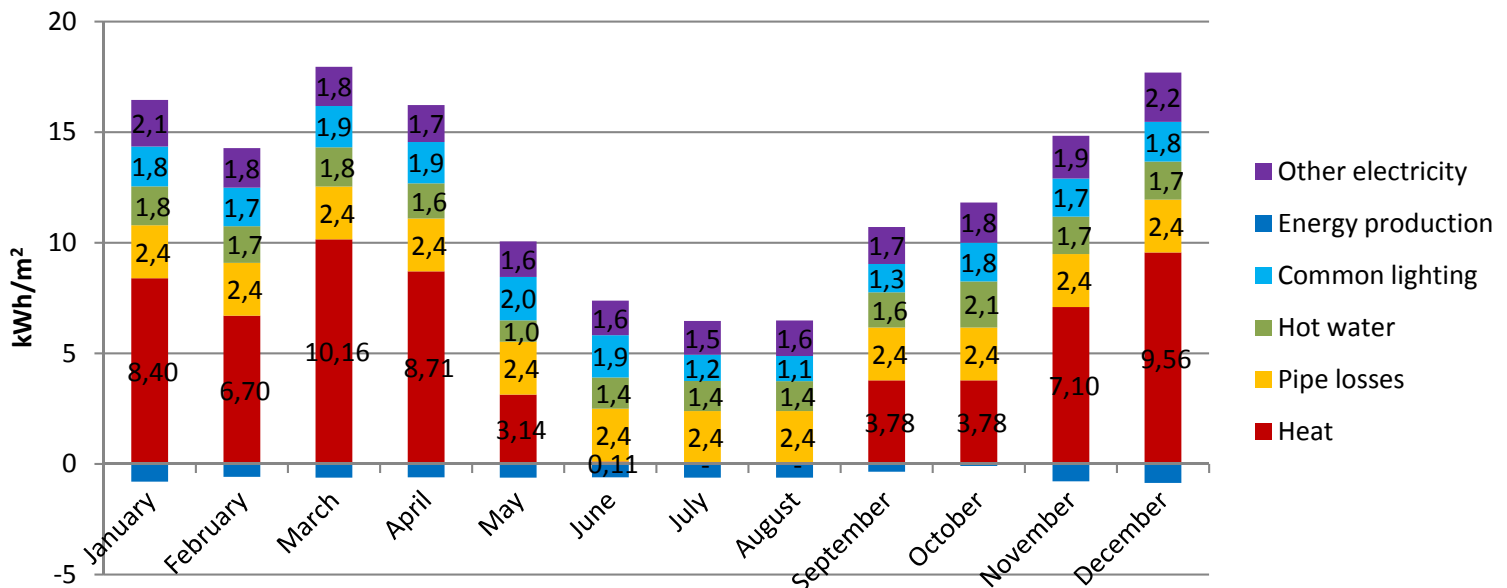
Special ECO-technologies applied:

- Heat pump
- New low energy windows



Energy consumption

Energy consumption 2012 - Degree day corrected

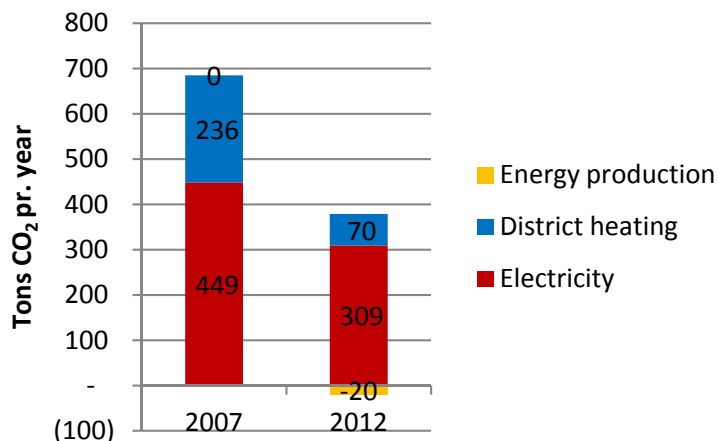


ECO-City project partners

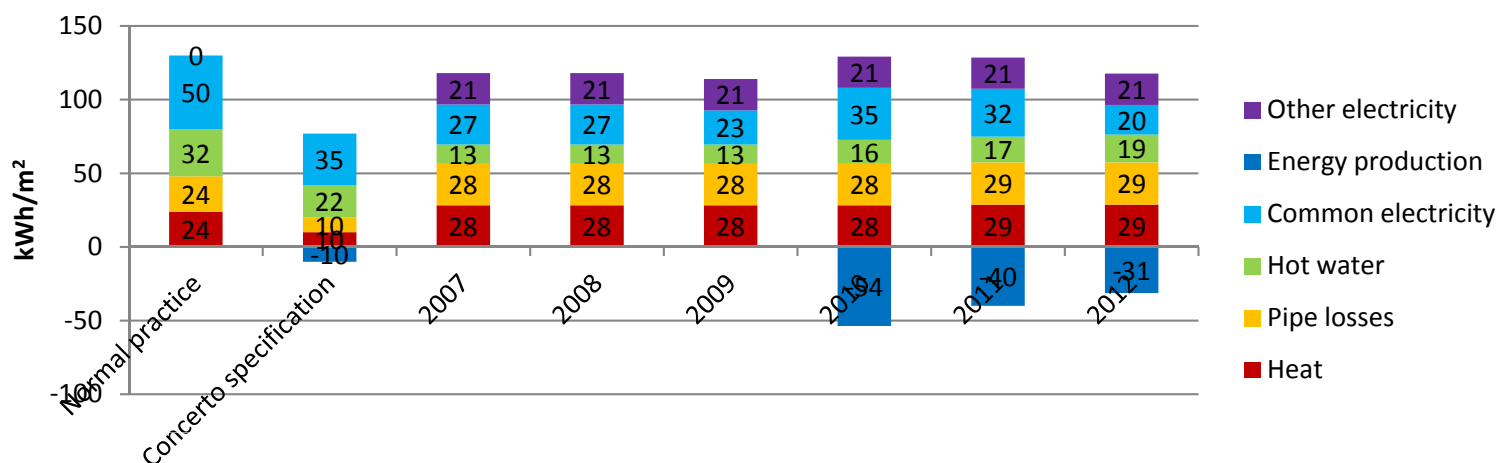
Lessons learned:

- Optimised windows almost solves the demands for improvement of building envelope
- Calibrating airflow of air heating system to hold 21 °C and heat recovery are important as well

CO₂ emission



Energy - specifications and consumption



Key figures

Heat trans.	Unit	Normal practice	Concerto spec.	Actual	Energy consumption	Unit	Normal practice	Concerto spec.	Actual 2011	Actual 2012
Outerwall	W/m ² K	0.4	0.25	0.4	Heat	kWh/m ²	86	60	60	61
Roof	W/m ² K	0.25	0.2	n.a.	Pipe losses	kWh/m ²	24	10	29	29
Floor	W/m ² K	0.3	0.25	n.a.	Ventilation	kWh/m ²	28	20	-	-
Windows	W/m ² K	N.A.	1.1	1.2	Hot water	kWh/m ²	32	22	17	19
Glazing	W/m ² K	1.8	<1.1	0.95	Total heat	kWh/m²	170	112	106	109
Doors	W/m ² K	-	-	1.2	Lighting	kWh/m ²	50	35	32	20
Vent. rate	h ⁻¹	-	0.5	0.5	Other	kWh/m ²	-	-	21	21
					Total elec.	kWh/m²	50	35	54	41
					Heat pump	kWh/m ²	0	-10	-40	-31
					Total	kWh/m²	220	137	120	119

ECO-City project partners